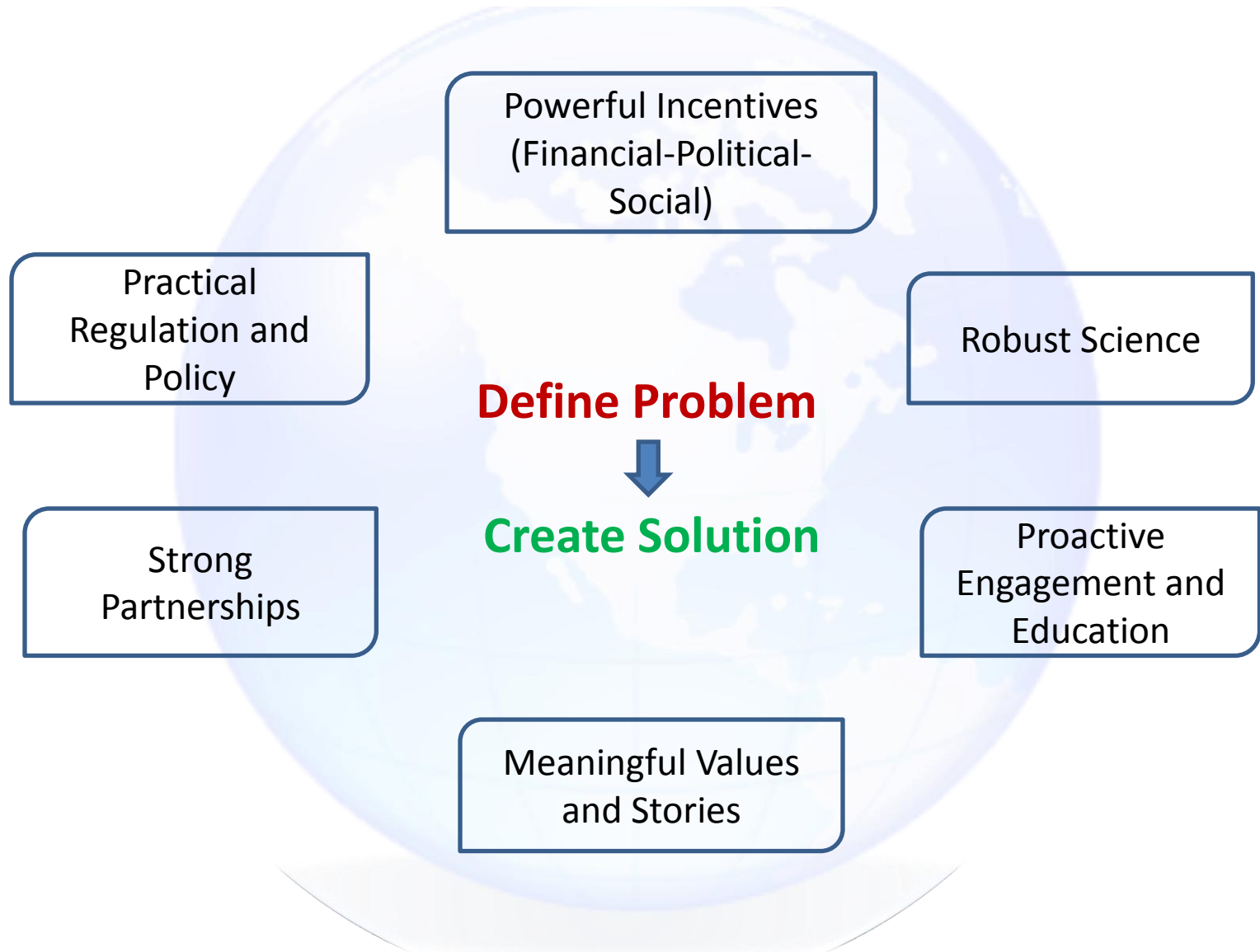


Whole Systems Solutions Framework

Adapted from Sustainable Path Foundation



Key Evaluation Terms

Activities: *What you do*

- Prepare report, convene meetings, collect data, etc.
- Measures are used to gauge proposed work scope

Outputs: *The results of your activities (usually quantitative)*

- Delivery of finished report, meetings held, database established, etc
- Measures are used to gauge success of activities

Outcomes: *The effects of outputs on solving core problems in areas addressed*

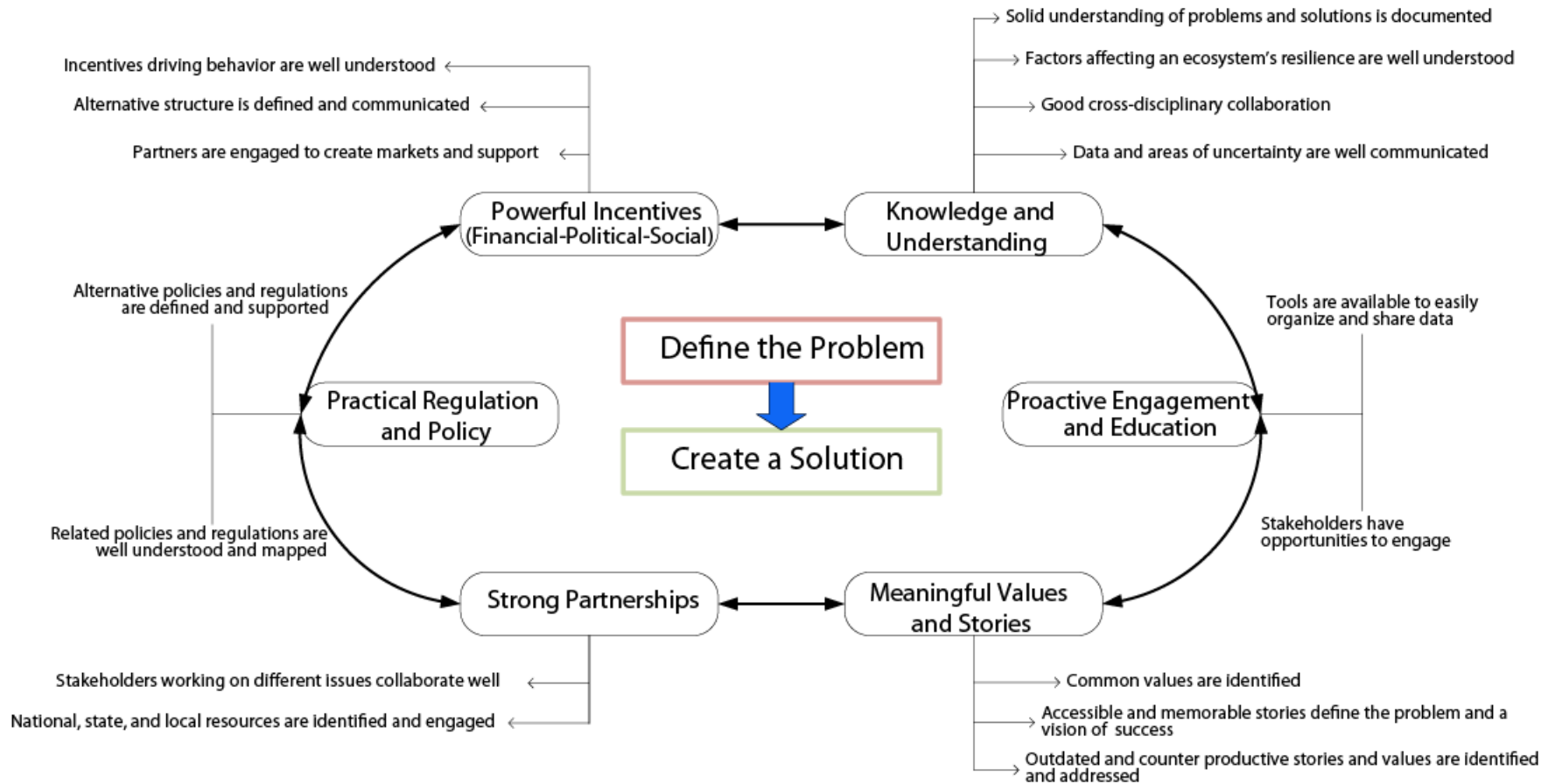
- Short-term (1-3 years): Report spurs key action, meetings result in powerful partnerships, data bases of implemented solutions
- Long-term (\geq 4-6 years): Measured amelioration of core problem due to key action, partnership successes, or implemented solutions using data
- Effects grow or are replicated
- Can lead to **Impacts:** *Spread of effects of outputs and outcomes outside of original efforts*
 - Leads to solutions to core problem in other areas of system map
 - Outcomes are applied or adapted for solutions to different core problems within or outside Puget Sound
- Measures are used to determine whether work made a difference in efforts to increase sustainability

Goal	Approach to Solution	OUTCOMES	
		End-of-Grant (one year)	Long-Term (> one year)
<p>To fund creative projects which apply whole systems thinking and scientific understanding to address critical issues of sustainability and resilience in our region.</p> <p>To support Puget Sound-based projects that employ approaches based on science and systems thinking and address intersections between natural systems (i.e. environment) and human systems (i.e. economy, health, community).</p>	Robust Science (physical, biological, social)	<p><i>All Sustainable Path Foundation supported projects must be based in credible science.</i></p> <p>Programs will show the following positive outcomes:</p> <ul style="list-style-type: none"> • More focus on root causes of problems and opportunities for systemic change. • More documentation of solid scientific understandings of a problem and/or solution to a problem <i>A total of 19 survey sites were added in Puget Sound, representing a 41% expansion in area surveyed. Our base of trained volunteers correspondingly grew 79% from 53 to 95.</i> • Increased understanding of the factors affecting an ecosystem's resilience • Increased cross-disciplinary collaboration amongst scientists • Improved communication regarding data and areas of uncertainty <i>Seabird experts and statisticians from University of Puget Sound and Washington Department of Fish and Wildlife will design and implement experiments to test the statistical strength of the program methodology and, if appropriate, recommend ways to improve the protocol.</i> 	<p>Funded projects produce scientific data that is used by other scientists, the public, and policy makers to enhance the health and sustainability of the region. Projects are replicated or influential outside of the Puget Sound region.</p> <p>Project is scalable and replicable. They are currently seeking partnerships to explore the relationships between bird densities and forage fish densities</p>
	Proactive Engagement and Education	<p>Sustainable Path Foundation supports projects that provide opportunities for individuals or organizations to expand scientific awareness and scientific literacy skills.</p> <p>Programs will show the following positive outcomes:</p> <ul style="list-style-type: none"> • More tools are available to easily organize and share scientific data <i>They have posted data sets and analysis on their website, along with a citizen science tool kit.</i> • Increased opportunities for the public to engage in sustainability issues <i>A total of 92 volunteers participated, 44 of whom were new for the survey season. We had an 82% retention rate with 48 volunteers (of 54) carrying over from the previous season.</i> • More students have access to science literacy projects that focus on sustainability and/or systems thinking • New or greater number of educational outreach activities in relation to project 	<p>More citizens in the Puget Sound region have a scientific understanding and systems approach to their personal and professional decision making.</p> <p>Overall they increased the number of trained and engaged volunteers and new community partnerships</p>
	Meaningful Values and Stories	<p>Sustainable Path Foundation recognizes that respect for the interconnected nature of our world influences meaningful values and positive stories. Insightful, innovative scientific and systems thinking is fundamental to imagining and creating solutions for a healthier world. Programs produce the following positive outcomes:</p> <ul style="list-style-type: none"> • New publications, presentations or media coverage as result of project • Articulation of common values that are identified across groups or sectors • Memorable stories which define a problem and a vision of success are created or made more accessible <i>Audubon nurtures the community amongst program volunteers by: sending out monthly emails which report interesting sightings from the previous months' survey; advertising seabird ID workshops in the area; and distributing a summary at the completion of the survey season</i> • Outdated and counter productive stories and values are identified and addressed 	<p>Citizens in the Puget Sound region have stories and values that support their personal and professional decision making and actions that increase health and sustainability. They reference an intended media plan for phase two (public data access launch), for which I could find no evidence on their web site.</p>

Whole System Solutions Framework

adapted from Sustainable Path Foundation

This framework evolved from the concept that sustainable solutions to tough problems require understanding and change in each of the six focus areas below. It is intended as a tool to help stakeholders evaluate a problem and prioritize funds and resources to best achieve change.



Reading List

Leadership on the Line: Staying Alive through the Dangers of Leading
Ronald Heifetz and Marty Linsky, 2002, HBR Press

Leadership Can Be Taught
Sharon Daloz Parks, 2005, HBR press

The Necessary Revolution
Peter Senge, 2008, Doubleday

Whole Systems Solutions Framework is taken from
<http://sustainablepath.org/category/about-us/our-philosophy/>

Term Definitions

A description of the project you are proposing, including:

- Activities, outputs, and outcomes
- *Activities* are what you will do.
- *Outputs* are quantitative results of activities.
- *Outcomes* are specific changes in behavior, knowledge, skills, status, and level of functioning—what you hope will happen. Examples are voters passing a referendum or reduced levels of pollution in estuaries. Short-term outcomes may take 1–3 years to achieve and long-term outcomes may take 4–6 years or longer.